

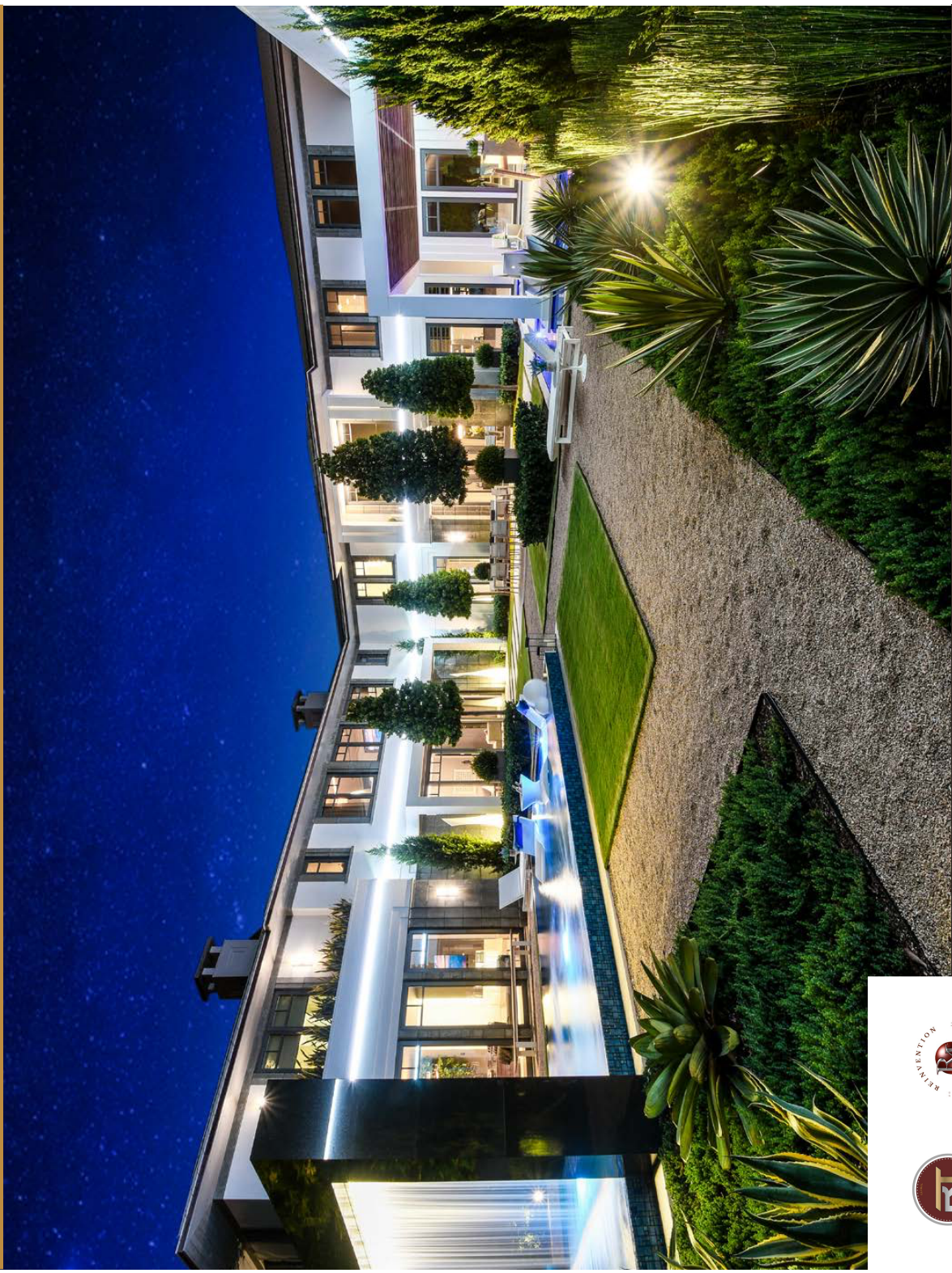
# LAGO A LAGO

PALM BEACH ISLAND

2019 EDITION

THE MAGAZINE AND A TOUR THROUGH THE PERSONAL RESORT

COME DISCOVER WHAT IS DISTINCTLY VILLA LAGO-A-LAGO!



WHAT'S YOUR  
REINVENTION?



SCHOTTENSTEIN  
REAL ESTATE GROUP

520island.com

View of the main living quarters, from the VIP Suite's bathroom window, as the home's footprint zig-zags around a central courtyard

## LAKE TO LAKE

---

This resort-inspired home on Palm Beach Island's iconic 'Estate Section' puts a contemporary spin on local materiality and architecture to create a luxurious modern holiday home ideally tailored to its beautiful surroundings.

This getaway home, designed by award winning Roger Janssen of Dailey Janssen Architects, is named Lago-a-Lago or Lake to Lake, which aptly describes the property's uniqueness of having Intracoastal frontage on both the front and backyards, each equipped with separate docks, the west dock being over 150' in length. Unlike most of the Palm Beach "Lake trail," these Intracoastal views boast the most premier portraits of the WPB Skyline and the Worth Avenue Yacht Marina on the west & north; plus Everglades Golf Club to the east.



# LETTER FROM THE CREATOR / DEVELOPER

Hello, my name is Corey Schottenstein, and welcome to Lago-a-Lago!

Whenever I start a new development, the first thing I do is stand on the lot, and pretend it is a blank canvas, and imagine what it could be, and what could be created there. I study the surroundings, close my eyes, and let my imagination take over. This canvas, 520 Island Drive, had several unique and defining aspects to it that made it irresistible and I knew something special could be created on it.

For one, the obvious and immediate attraction to it was the Intracoastal lake frontage on both sides. The two lakefronts made the property feel secluded, as if it were its own private Island, within the Island that is Palm Beach. On the rear Intracoastal, you can stand on the seawall, look north, and see a pink house budding up to the Worth Avenue Lagoon and it feels like Venice.

I asked architect Roger Janssen to showcase the lake on both sides of the property, so we built the house with a footprint that wraps around a center courtyard, and lined it with strategic landscaping to keep your line-of-sight focused on both bodies of water, all the way through, at the same time. You can have a drink at the bar in the Lounge, and look left, look right, and see water in either direction, quite unique for Palm Beach. In turn, this created a "See-Thru Concept" which you can see on page 8 of the magazine.

A second compelling feature was the immediate view of the West Palm Beach skyline. I remember the first time I drove to the lot at night. Right when you turn that corner on the North part of Island Drive, and that lit up skyline hits you, it is quite stunning and also surprising. It certainly isn't Miami or New York! But it is still very different from any other lakefront home on the Island where you're looking into blank or dark space. This view allows you to not feel isolated, but secluded, and exclusive.

This secluded feeling of the property was what gave me the idea to make the surroundings feel different and unique from the rest of the Island, while still keeping with the character of the neighborhood. I wanted it to be the first of its kind for Palm Beach, to set a new standard, and different from every other Bermuda Style or West Indies shuttered white stucco home you see under construction or newly built on the Island. At the same time, it was very important to me not to make this home too much like a "Miami Modern." I wanted a timeless home that was the perfect getaway retreat and entertaining hub. I wanted it to be more elegant, dressy, resort-like — and not too flashy.

We accomplished this by making the vibe of the home almost a California modern, with lots of different wood veneers and desert variety of landscapes, including gravel areas as well as plants from the desert such as agave and yucca. Additionally, we tried to blur the boundaries between inside and outside, and incorporate lots of water elements to create a tranquil or zen-like environment. One could say that the home offers residents & guests a full water-sensory experience, most apparent by the waterfall "rain-curtain" as you dine alfresco in the LED-Lit courtyard, similar to a very authentic Italian resort feel.

People ask me all the time, "What's the one secret to building an ultra high end custom home and making it a success?" The answer I give them every time is "Don't cut any corners, do it right! And you can't go wrong." That's what we did at Lago-a-Lago. The home is finished totally "turn-key", or move-in ready. There are design details galore in this home. We did not keep budget in mind during the design phase, but rather, along with DKOR Interiors, we designed every inch of it. I asked DKOR Interiors not to leave any white walls in the entire home, including guest bedrooms and bathrooms. I said I wanted every wall covered and nothing left unfinished. We also put emphasis on having more edgy accent headboard walls in bedrooms, while leaving the other walls more neutrally wall covered, in order to make a statement when entering individual spaces.

Another point of emphasis that was important to me in this home was LIGHTING. There is LOTS of LED lighting in this home, including strip lighting as well as several applications of back-lighting via LED panels. Lighting changes the vibe and the mood of a space, and dramatic lighting schemes can transform spaces at night time to a magical environment. You can see this in the "Come To Life" section of the magazine on page 58.

Finally, we wanted to create a "resort atmosphere." The home is set up like a dressy-modern 5-star hotel. The individual suites are all unique in design and layout, and not on top of each other. There are formal and casual spaces, indoor and outdoor living with amenities you would find at a resort, each bedroom has its own spacious terrace. Each closet comes equipped with a safe (just like a hotel), and the design details incorporates lots of contrasts of brass to marble inlay reveals.

Building a home of this nature on Palm Beach Island, especially in the Estate Section, was an extremely challenging endeavor, and would be a major task for someone to take on to try to re-create, not only in the approval process, but in getting the product, amenities, and craftsmanship to match the vision, as the designs and features of the home are very extra-ordinary and outstanding. This makes the feeling of accomplishment, now that we have finally reached the finish line (3-years later!) all that more satisfying!

Come discover & enjoy what is uniquely Lago-a-Lago!



## CONTENTS

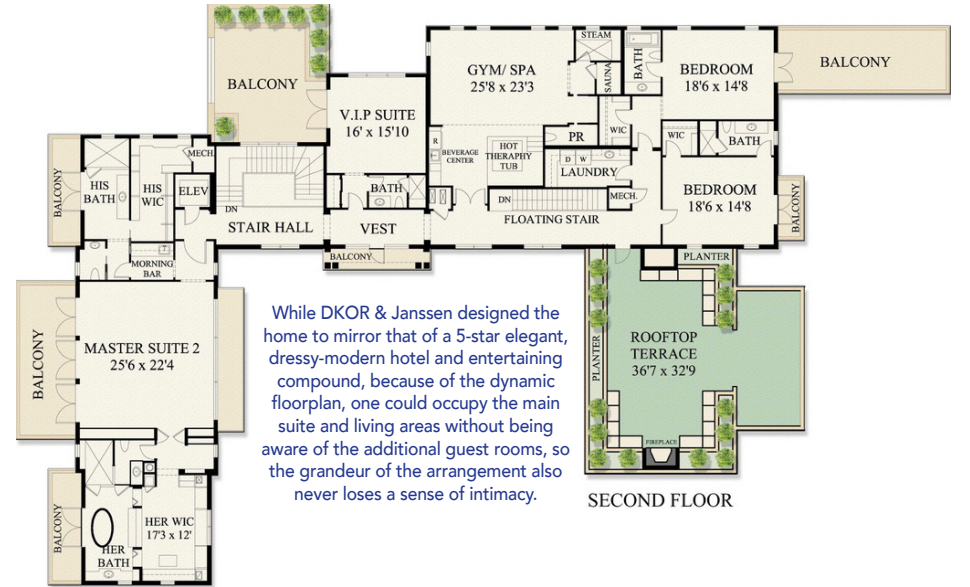
FLOOR PLANS .....	07	BEDROOMS .....	46
SEE THRU CONCEPT .....	08	BATHROOMS/CLOSETS.....	50
SKY LOUNGE .....	16	NIGHT LIFE .....	58
EXTERIOR COVERED LIVING SPACE .....	18	SOCIAL SCENE .....	72
EXTERIOR BLING FEATURES .....	20	NEIGHBORHOOD.....	76
DAYTIME .....	24	ART GALLERY.....	80
INTERIOR .....	30	LISTING INCLUSION .....	82
THE LOUNGE .....	36	SQUARE FOOTAGE BREAKDOWN .....	83
THE SPA.....	44	AMENITIES .....	85



Formal Living Room features a floating back-lit semiprecious stone fireplace. Custom built wood floor and ceiling are laid in chevron and diamond patterns.



"The Lounge" at Villa Lago-a-Lago - Cabaret style



**SEE THRU  
CONCEPT**









# DAILEY JANSSEN ARCHITECTS

400 CLEMATIS ST., SUITE 200, WEST PALM BEACH, FLORIDA 33401

TEL: 561.833.4707    WWW.DAILEYJANSSEN.COM    ROGER@DAILEYJANSSEN.COM

The grounds of the home are like your own private resort. There is **water everywhere**, and not just in the Intracoastal Waterway. The home even has a moat-like feature. It's part of the main swimming pool on the house's east side, with the water pressing right up to the sides of the house. The first-floor master suite was designed so residents or guests can get up in the morning, slide open the bedroom doors and take an immediate pre-breakfast dip in the pool, while the family room bar & loggia appears to be floating. The pool also has an indoor-outdoor fireplace that doubles with the first floor Master Bedroom wing. In the center courtyard, is a "Spool", or a combination of a Spa & Pool with a waterfall or rain-curtain.

The way in which architecture and external courtyards are interwoven means navigation through the buildings involves constantly crossing between architecture and landscape, facilitating a powerful sense of place. The seamlessly integrated indoor-outdoor lifestyle is also a response to Palm Beach's climate during "season." The porous nature of the design encourages naturally cooling cross ventilation to flow in from the two Intracoasts.

Landscape was a key element considered while designing, used to define the unique California vibe as well as connect the landscape with the built structure. Designed by Lang Design Group, strategic placement of a Ligustrum tree alley with ornamental grasses off the facade and Japanese blueberries in the courtyard is a look inspired by Luciano Giubbilei. The line of sight is kept focused all the way through the home to the water views on both sides, as seen in the "See Thru Concept" section on page 8.



The minimalistic modern exterior design features the most high end limestone for an impressive and tasteful finish, concrete tile clean roof lines, and Hartman hurricane-impact mahogany windows. With a range of covered outdoor spaces and courtyards, pavilions and terraces, and rooftop "Sky Lounges," this hurricane resistant compound, anchored by concrete and steel, offers a variety of outdoor experiences with varying degrees of cover, for a total of 17,190 SF of indoor/outdoor living space, and 13,025 SF of air conditioned living space. There are modern limestone gravel courtyards and other ornamental grasses, agave, and yucca spread throughout the grounds, opposed to cliché Palm Trees. Lots of different cohesive wood slats, ceilings, and veneers, create an environment which has almost a California feel to it, very unique for South Florida

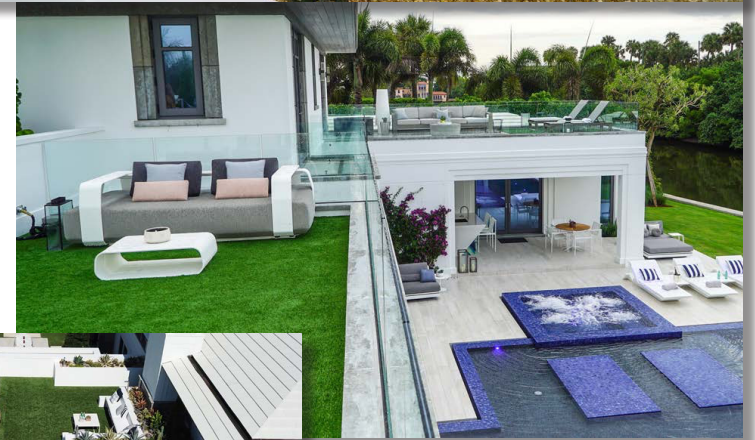
**The "Sky-Lounge"**

A most unique area of the home is found on the rooftop - the Sky Lounge. Featuring a fireplace, artificial turf, built-in seating, Sunbrite television & surround sound, huge sun deck, built-in planters, and plenty of relaxation & entertaining space. The grounds of the home are like your own private resort



No cliché palm trees are on the grounds, but rather a desert or California modern vibe was created

Outdoor designer brand furnishings from Manutti, Knoll, Vondom, and Gloster are included with the property



**Moat pool = floating house**



A fully weatherproof / cover-less TV from Sunbrite makes for the perfect "Sunday night show" venue



# EXTERIOR COVERED LIVING SPACE



Every guest bedroom comes with its own private, individual lounging terrace, contributing to that hotel resort feel for all your guests



SUMMER KITCHEN off the Cabana and Pool features a built-in towel rack, outdoor bathroom, BBO bar with sink and Italian glass backlit front + dining area

Multiple loggias are turned into Islands by the moat pool and fountains, creating impressive spaces for entertaining guests



Tranquil views of the water and golf course while feeling like you're on your own private Island

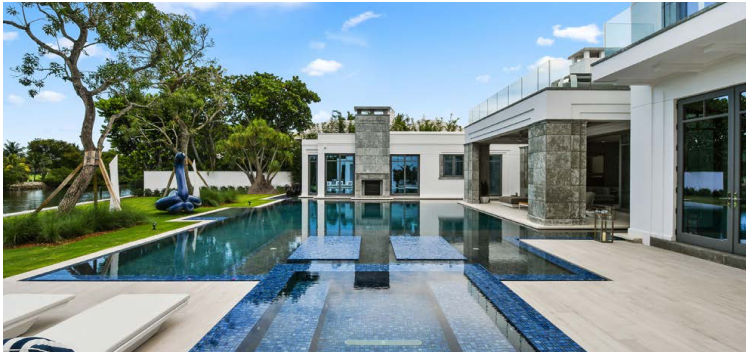


The West loggia comes included with a teak sofa from European designer brand Manutti, two ceiling fans from "Big Ass Fans" and built-in audio speakers to watch the sunset



Unlike most of the Palm Beach "Lake trail", the views across the wide Intracoastal anchoring this home are that of the WPB Skyline and Worth Avenue Yacht Marina on the west

# EXTERIOR BLING FEATURES

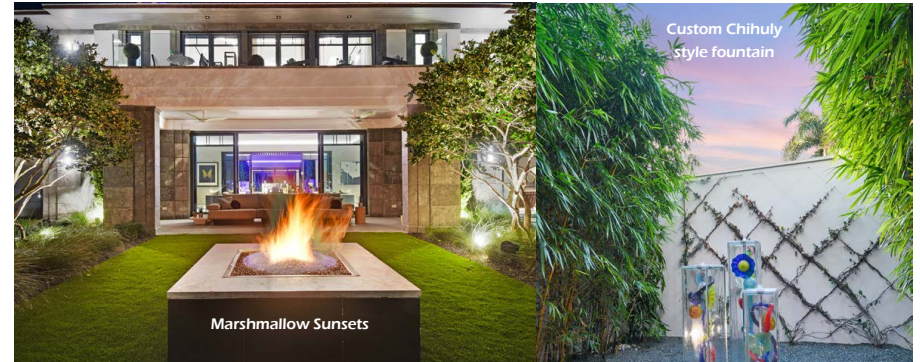


Euro-edge "Moat style" swimming pool where water presses right up to sides of the building

The swimming pool has an indoor/outdoor two sided fireplace that allows for bathers to swim up fire-side at night

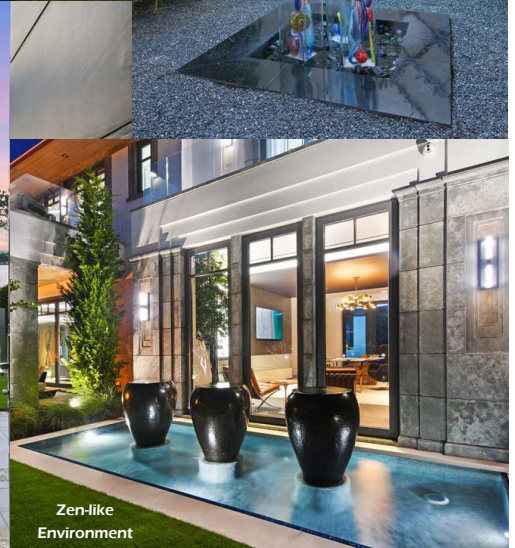
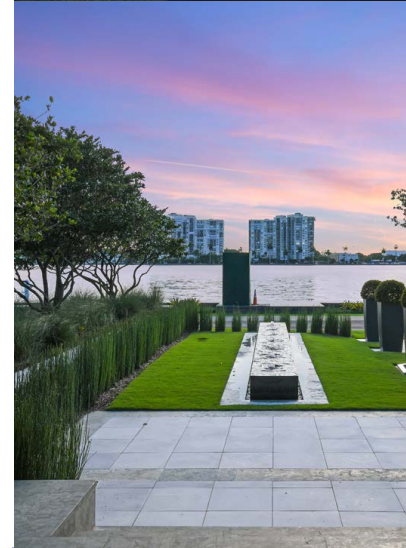


The first floor master suite was designed so guests can get up in the morning, slide open the bedroom doors and step directly into water



Marshmallow Sunsets

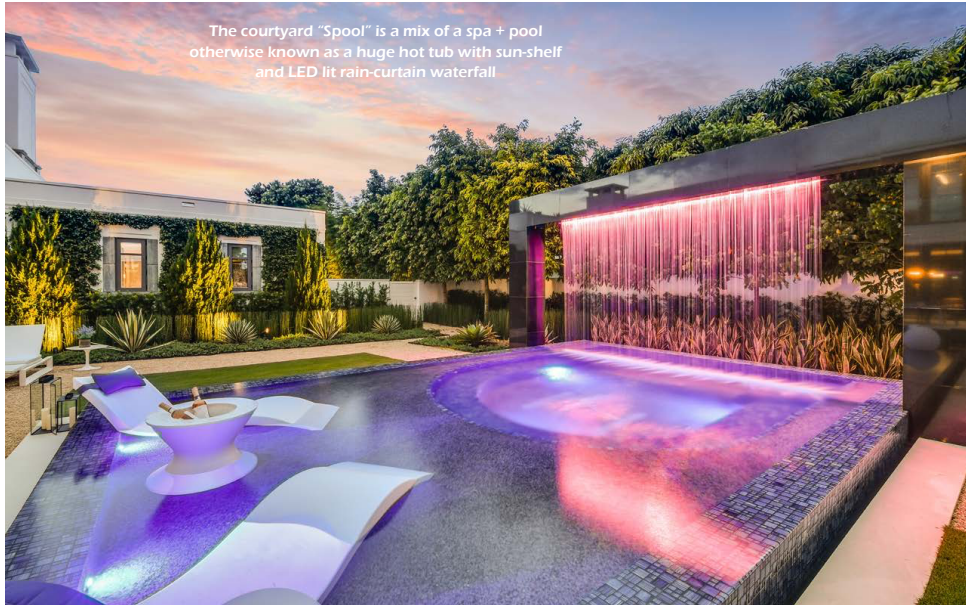
Custom Chihuly style fountain



Zen-like Environment



Pristine Landscape Design



**MANUTTI**  
Belgian outdoor furniture



These designer brands can be seen within the exterior living spaces included with the sale of the home

# DAYTIME

The grounds of the home are like your own private resort!





An oasis of serenity amidst the skyline



Alfresco Dining  
Palm Beach style



Center Courtyard



**CLEAN LINES**



The aerial image above portrays clearly how 520 Island Drive is the largest lot on Everglades Island (a double lot) at almost one acre expanding from lake to lake



The aerial image above portrays the view looking east from "The Sky Lounge" of the Everglades Golf Club, The Mar-A-Lago Club, The Breakers Hotel, and the Atlantic Ocean

# INTERIOR

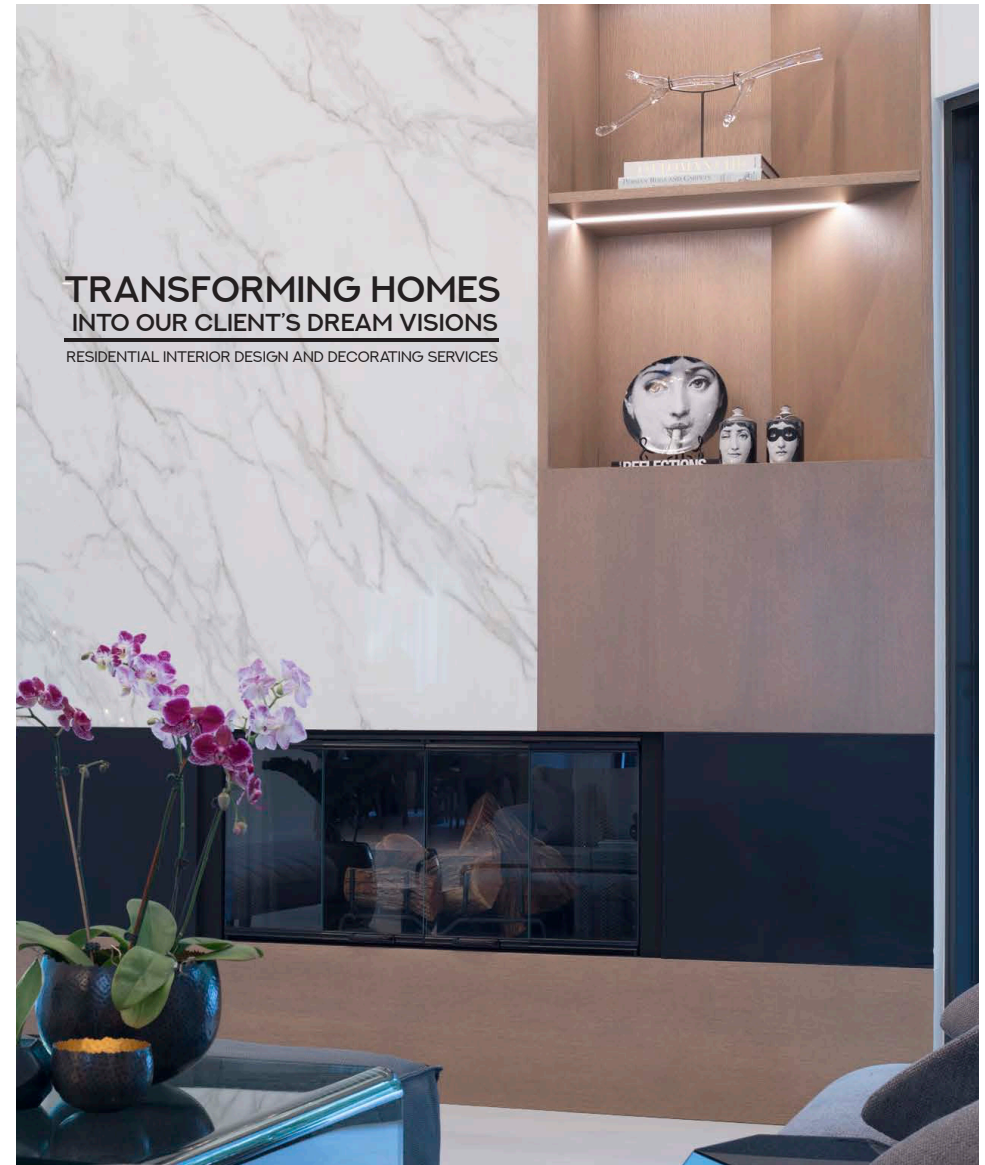
CONTOURING | LIGHTING | PATTERN | PROGRESSION IN MATERIAL

Discover the *mystery* of an exclusive villa!



Inside, a concept of discovery was implemented into this museum-quality finished resort by DKOR Interiors of Miami. For example, seamless, flush doors and master closets & bathrooms, hidden behind custom built-in mill work, add to the discovery concept.

Additionally, the grandeur of the arrangement was not given away immediately upon entrance, but rather a more intimate foyer with lengthy corridor crafted out of large Italian statuary marble slabs hand picked in Forte Dei Marmi, Italy within a brass inlay pattern. Similarly, throughout the plan, large spaces such as the formal living room and cabaret-styled lounge / bar, are balanced with intimately proportioned living spaces. Despite the large size of the structure and all the different spaces, there are **no white walls** in the entire home, something very important to the developer and design team. This differentiates 520 Island Dr. from other new construction homes on the market. Every single wall is finished with either designer wall coverings (vinyl, silk, and leather) custom wood veneers, or Italian marbles.



## TRANSFORMING HOMES INTO OUR CLIENT'S DREAM VISIONS

RESIDENTIAL INTERIOR DESIGN AND DECORATING SERVICES

**DKOR**  
interiors.

2079 NE 155TH ST NORTH MIAMI, FL 33162  
WWW.DKORINTERIORS.COM  
P: 305.981.2710

DKOR Interiors was the interior architect of all the details and finishes of Lago-a-Lago/520 Island Drive



# COMMON AREAS (ARE NOT SO COMMON)

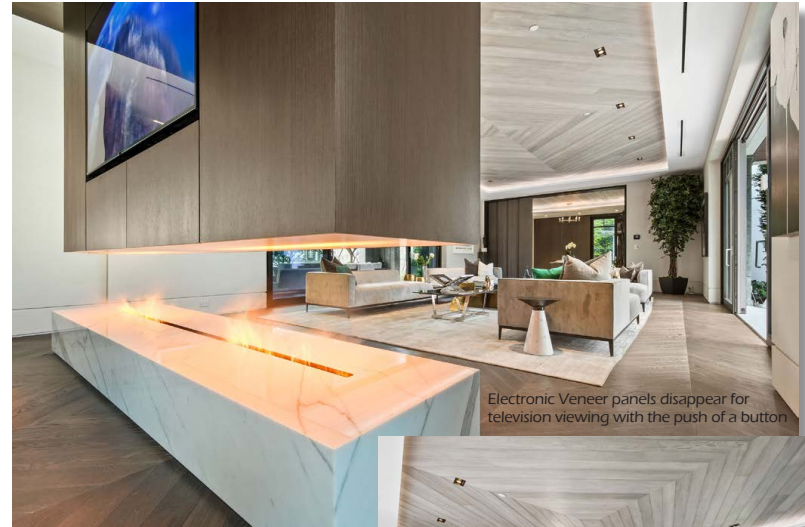
TEXTURE | CONTRAST | RHYTHM | PATTERN



All sliders can pocket all the way to disappear

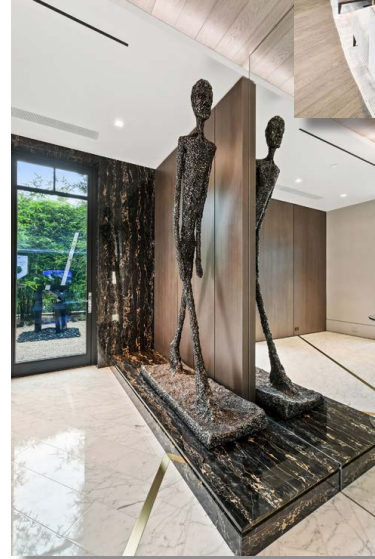


Formal Living Room with backlit and virtual floating fireplace



Electronic Veneer panels disappear for television viewing with the push of a button

Attention to detail is evident throughout the modern, yet timeless, interior. Much of the marbles, quartzite, and onyx were crafted on-site from imported Italian slabs to create the artistic design. Wood, marble, metal, semi-precious agate, and Gemstones are repeated in patterns accented by contouring and lighting. Interior and exterior Recessed LED lighting throughout the home imparts the tranquil and peaceful theme, and creates the perfect ambiance for a magical, come-to-life, evening entertainment mood



Giacometti "Walking Man" by Hamilton Aguiar



The Office comes with two twin Portoro Gold bars with custom integrated marble sinks

**OFFICE/STUDY**

**SOPHISTICATED**



**ELEGANT**



**SLEEK**

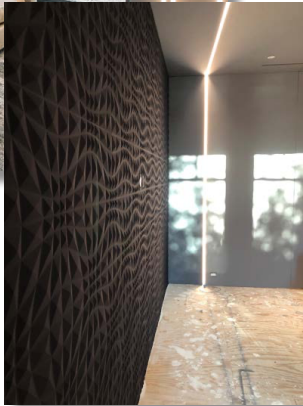


**AMBIANCE**



**THEATER DEN**

The Media Den showcases a Potoro Gold bar, theater style "lightning bolt" strips and a 3-D fabric covered screen wall



# THE LOUNGE

Fully furnished by Interior Marketing Group of New York City, the cabaret-styled "Lounge Room" will surely become a hub of the home. Situated between the moat pool and the central courtyard, the lounge features a beautifully backlit quartzite and onyx indoor/ outdoor bar that extends into the courtyard.





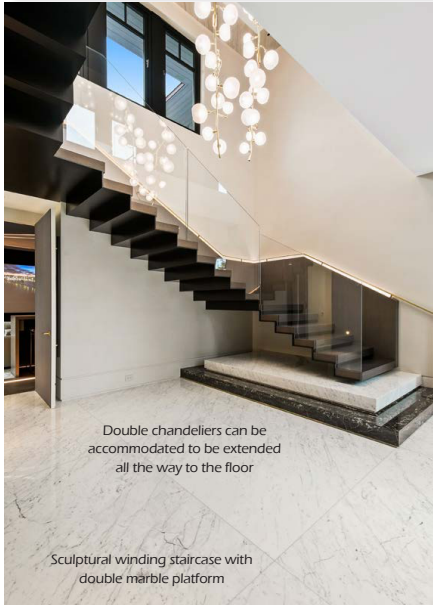
Floating staircase with Potoro Gold marble inside the treads and a LED lit brass handrail



"White Berry" double chandelier from designer Roberto Cavalli

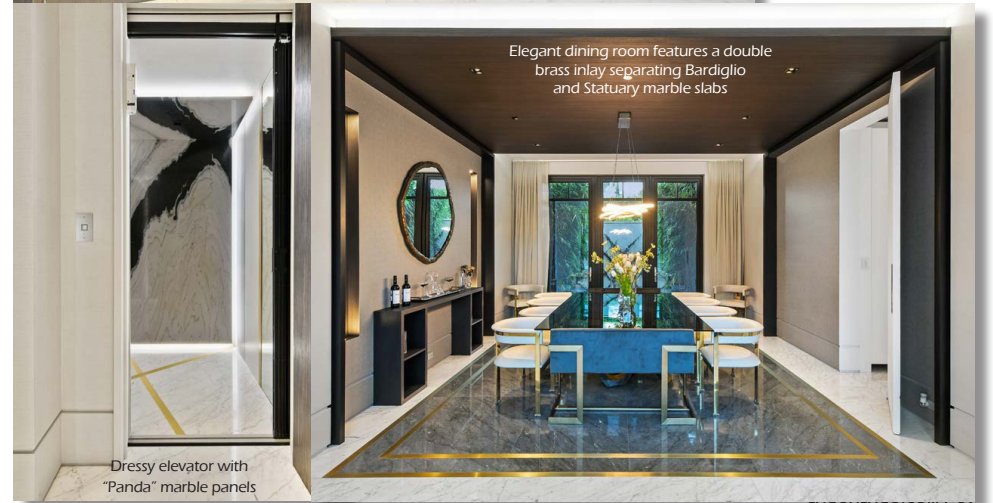


A spectacular 500 bottle glass, wood, marble and brass, temperature controlled, wine cellar is centrally displayed under one of two floating staircases, making for quite the show-stopper amenity



Double chandeliers can be accommodated to be extended all the way to the floor

Sculptural winding staircase with double marble platform



Elegant dining room features a double brass inlay separating Bardiglio and Statuary marble slabs

Dressy elevator with "Panda" marble panels



Modern kitchen adorned with statuary slabs and brass inlays. Agate gemstone from the Antolini Italian brand fronts the angled island



Additionally, the kitchen is setup as a "Discovery Chef's Kitchen" featuring a giant butler pantry hidden by a custom millwork patterned door that blends with the sub-zeros and connects to the dining room



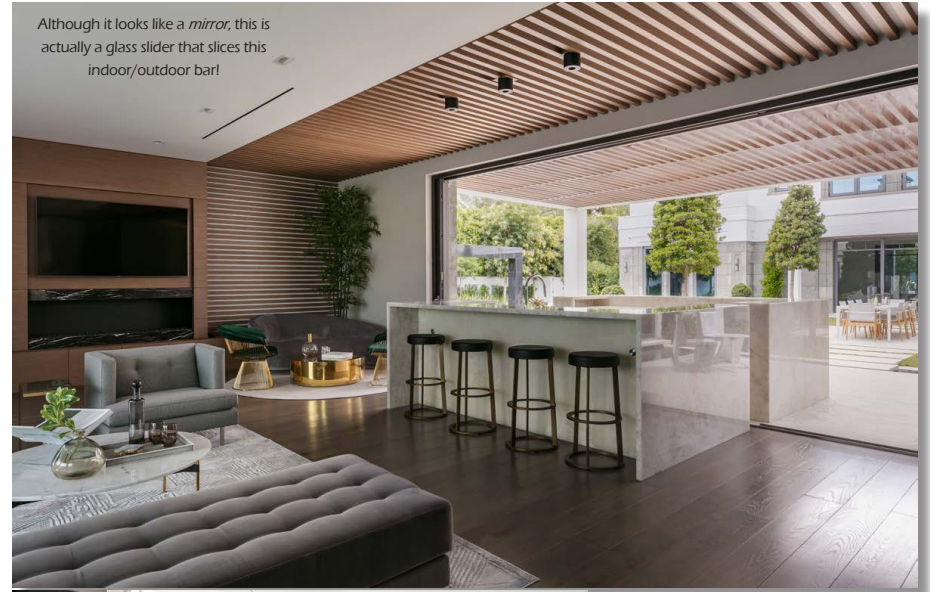
There are two laundry rooms, one upstairs, one downstairs. The upstairs laundry room features a Beverly Hills Hotel classic theme



The downstairs laundry room has special order Andy Warhol "flowers" designer wall covering



The cabana was designed with a Malibu feel; notice the wood-slat ceiling and hanging swing chair in the bay window



Although it looks like a *mirror*, this is actually a glass slider that slices this indoor/outdoor bar!



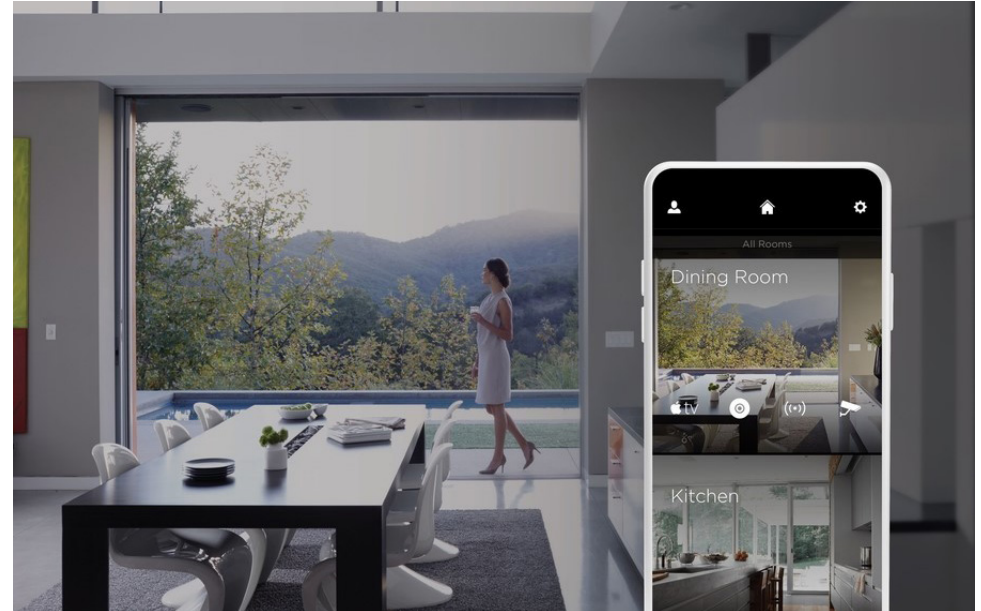
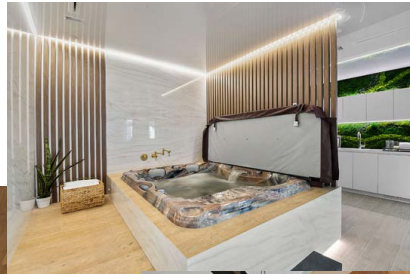
While the home is setup as a getaway resort residence, for more full time occupiers, the cabana and summer kitchen off the pool is purposely detached from the main residence to allow it to potentially double as a live-in quarters, if required. Albeit detached, one can access the quarters without ever walking uncovered



**DETAILS!**

# THE SPA

The Spa at Lago-a-Lago (staged as a yoga retreat) is large enough for several work-out machines and consists of a cold/hot therapy tub, steam room, sauna, living moss wall, and reflective "stretch" ceiling for authenticity



Move into Villa Lago-a-Lago with just your toothbrush and smart phone, everything else is already programmed via Lutron's state of the art Savant smart-home system! #TURNKEY

# SUITE DREAMS

DETAILS | DEPTH | OUTLINE | TIMELESS TOUCHES



Contributing to the hotel or resort inspired theme, there are two Master Bedroom Suites, one upstairs - one down, each with dual master baths, and amazing custom "His" & "Her" walk-in closets. The first floor master wing appears to be floating on water like an island, while the second-floor master suite offers grand design features from the lofted ceiling with recessed LED lighting, to the built-in cabinetry concealing the dressing and bathrooms, to the white marble partition which is the backdrop of a custom-built shagreen covered headboard

With the best brand plumbing fixtures such as Dornbracht and THG, Calcutta Gold slab floors, marble slab side walls, mirrored vanities, gold reveals, and an exquisite back-lit, solid gold inlaid, semi-precious Agate shower from Antolini, both master baths are an elegant retreat

Each master bedroom has their own morning coffee bar with fridge & ice maker appliances and Italian marble slabbed counters



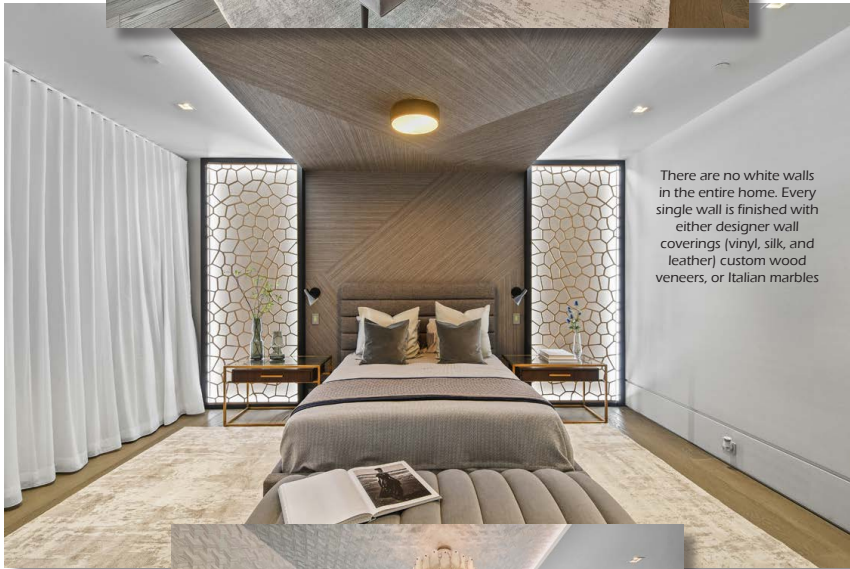
There is no shortage of details at Lago-a-Lago! This mantra follows through even in the guests bedrooms. This one is shown with a custom built padded leather headboard with metal patterned inlay to provide a pop

Every bedroom is equipped with blackout Lutron shades & sheers or drapes, allowing guests the ability to move in and sleep comfortably in the home on night one. Totally turn-key!



The VIP Suite was designed so guests can slide open the doors and step right into water for a pre-breakfast morning dip





There are no white walls in the entire home. Every single wall is finished with either designer wall coverings (vinyl, silk, and leather) custom wood veneers, or Italian marbles

Specially made veneered screens front shagreen covered wall panels wrapped in LED lighting as pictured above



# LUXURY DESIGN

Award-winning interior design firm as seen in:



NEW YORK CITY

HAMPTONS

SOUTHERN FLORIDA

LOS ANGELES

CONNECTICUT



877.866.5735 | hello@imgnyc.com

TO SELL, RENT, OR LIVE



MORE THAN JUST  
TURN-KEY STAYS

The entire interior furnishings of the home was staged by Interior Marketing Group of New York, and each individual piece or space can be rented or purchased outright.

# 5-STAR BATHROOMS & WALK-IN CLOSETS

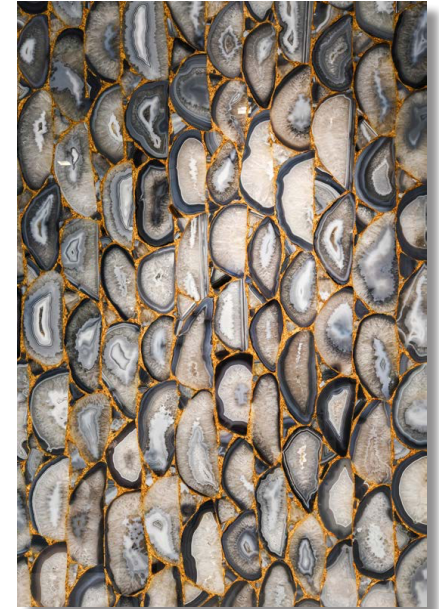
PERSONAL SPACES | IMMENSE | DRESSY ELEGANCE | PALM BEACH VIBE



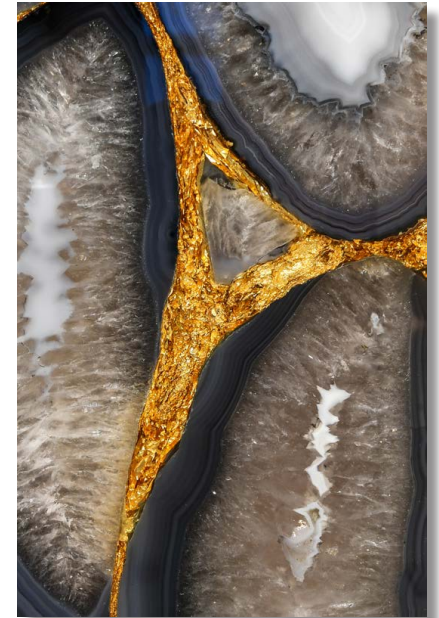
Faux door that appears to be just a linen closet, opens to HER Master Suite. #DiscoveryDesign



This walk-in closet Island highlights more back lighting. This counter is imported Italian Art Glass



Fabricated in Italy, these shower walls are made out of backlit gemstone marble slabs with solid gold inlays from the world renowned Antolini brand #WildAgate





Mirrored vanity

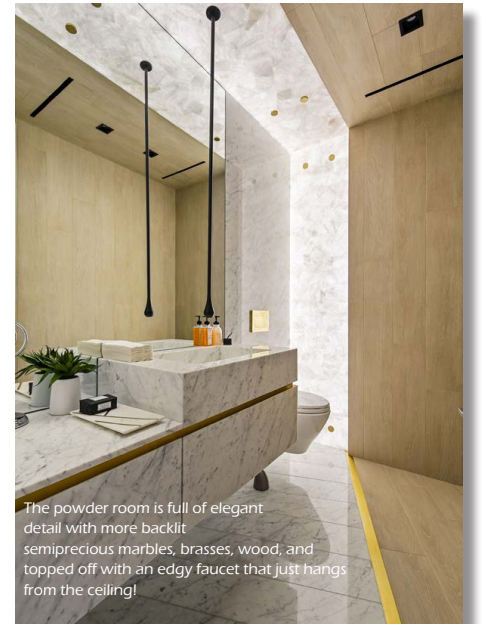
Soak with a view



Every single closet in the personal resort comes with an already installed Safe to make you and your guests' stay more comfortable



100% Calacatta Gold bathroom & closet  
VIP suite



The powder room is full of elegant detail with more backlit semiprecious marbles, brasses, wood, and topped off with an edgy faucet that just hangs from the ceiling!



Black Gold Calacatta marble bathroom with Gold accent wall



This men's VIP bathroom was designed with a Ralph Lauren flavor in mind



This guest bathroom includes a bathtub shower for any guests that may have young children. It is a Antolini "Explosion Blue" marble



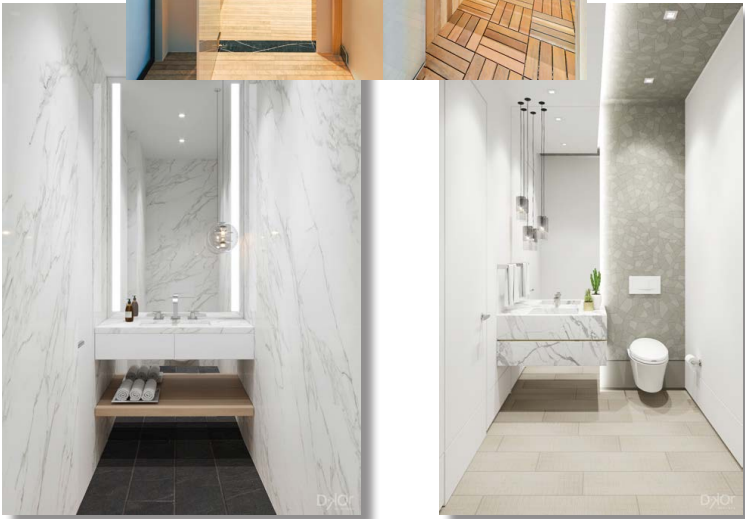
Herringbone X Silverwave #MarbleOnMarble



As shown above, a "Croc Niche" is incorporated into this guest shower



There are 11 total bathrooms in this personal resort



## HALLWAYS FOR DAYS...



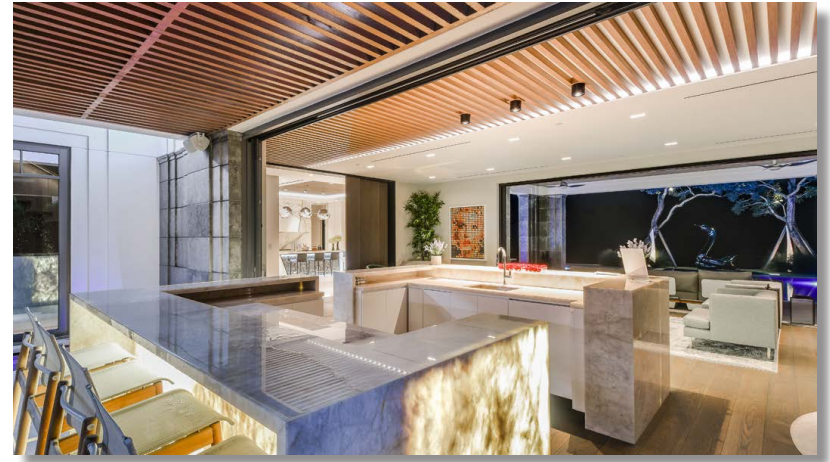
\*\*Although this is actually a Butler Pantry...

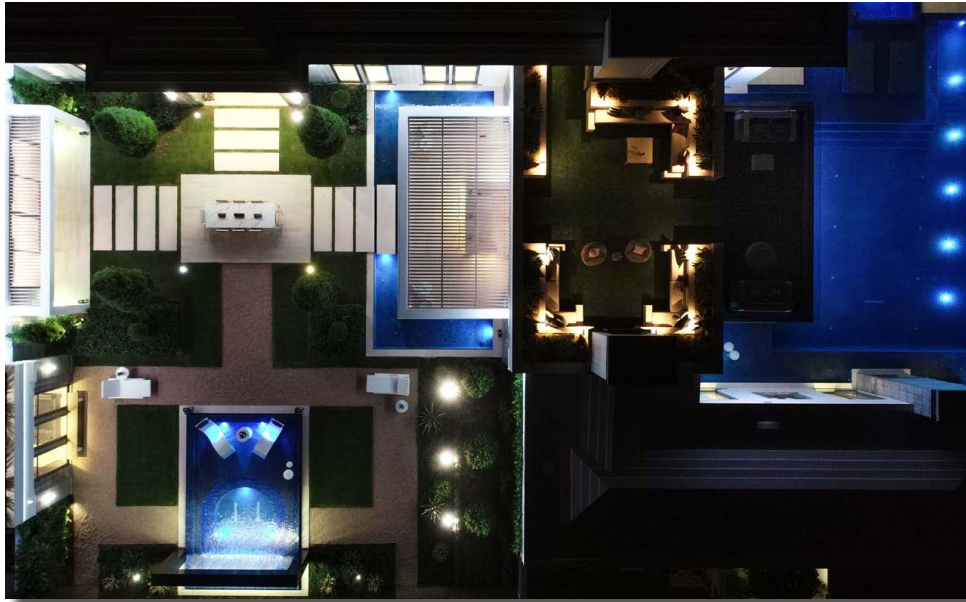
That's a lot of cereal!!

# COME TO LIFE

LIT | ENTERTAIN | MOOD | SCENE

Light up your life with miles  
and miles of LED lighting!!

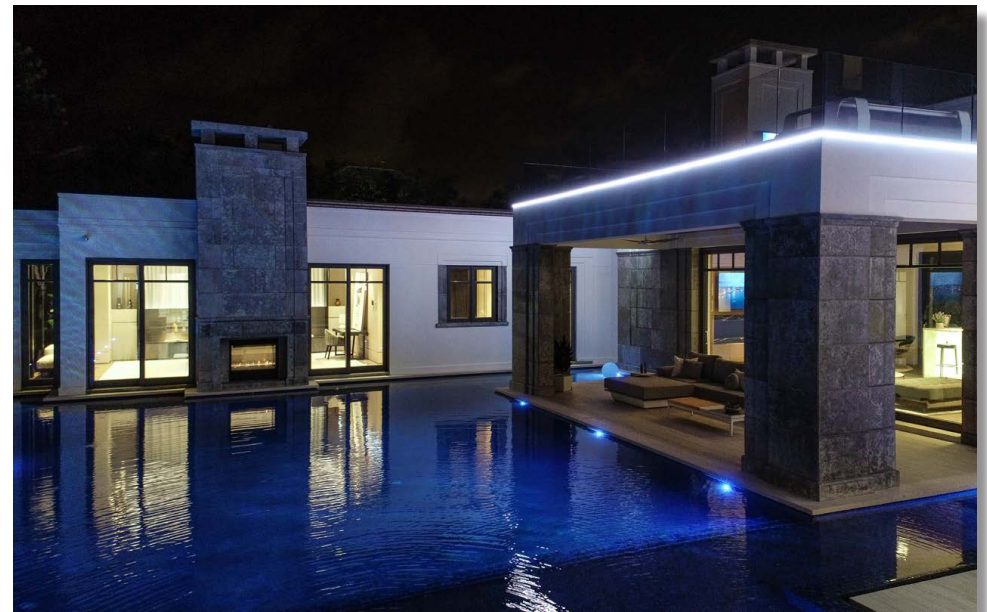




Infinite color changing possibilities to tailor whatever your event may be. Even the landscape lighting can change colors



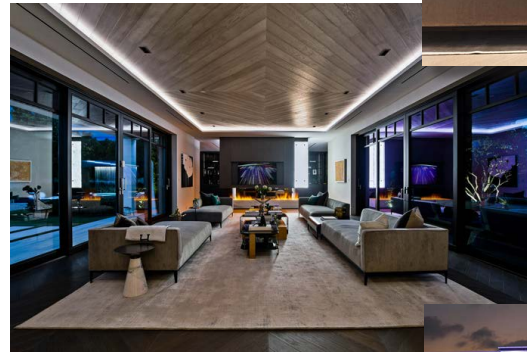
This suite was designed to be an Island floating in the swimming pool **MAGICAL!**





**SCENEY**

**VENUE**



**STYLISH**

**SEXY**



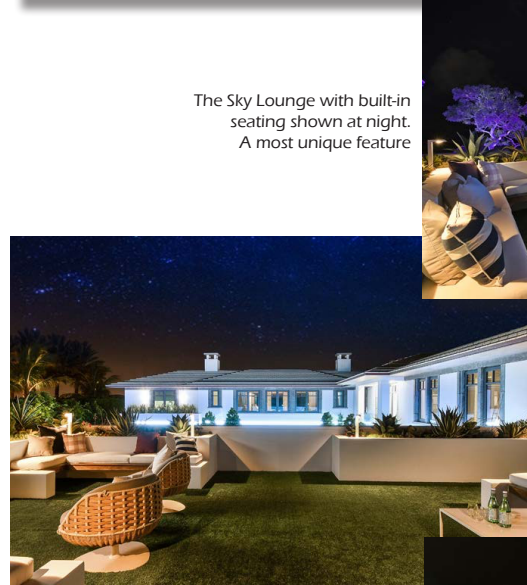




Dock views speaks for itself!



Backlit... EVERYTHING!



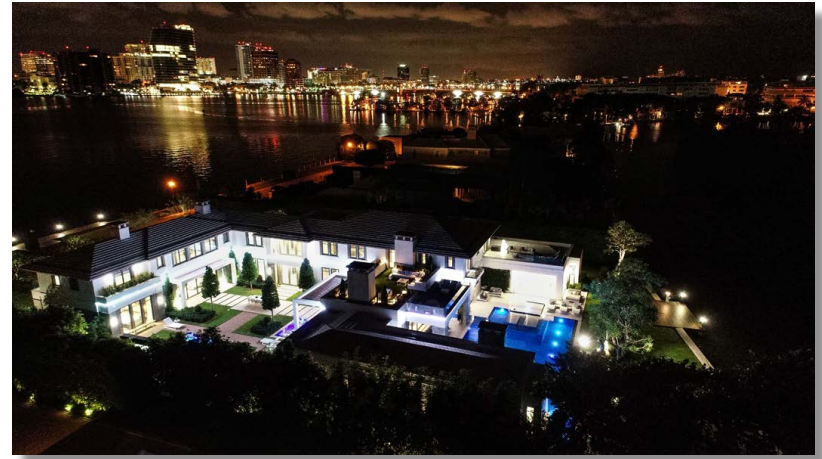
The Sky Lounge with built-in seating shown at night. A most unique feature





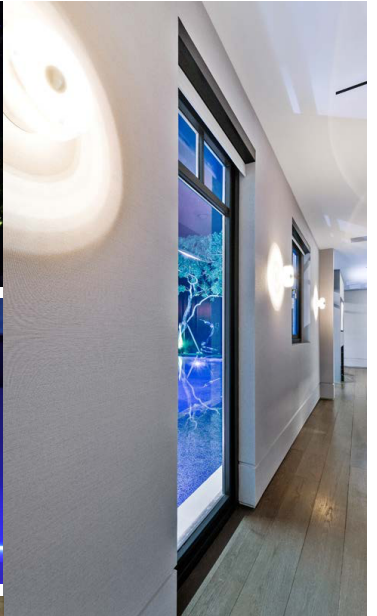
Feel the breeze during season from the formal living room







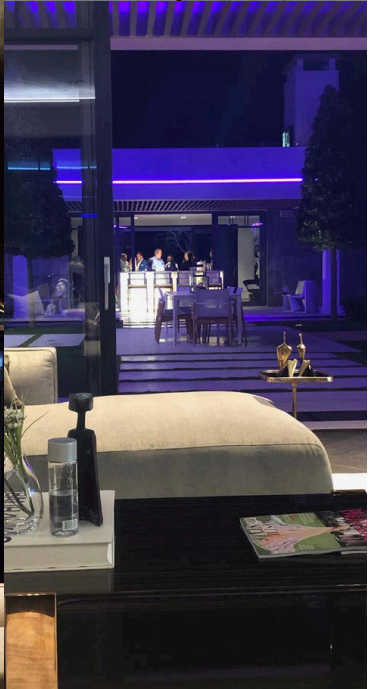
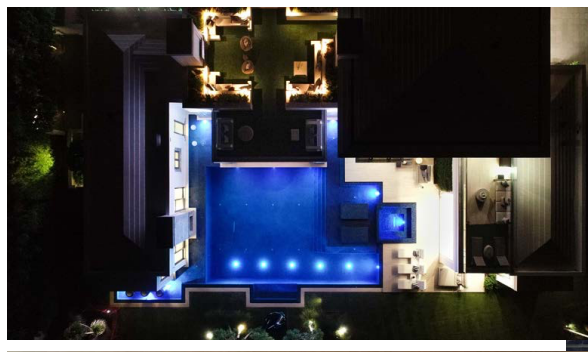
**SECLUDED**



**ENTERTAIN**



**ENJOYMENT**



**DREAM ON!**



# “SOCIALITING”

AN ENTERTAINER’S HEAVEN





# 'THE ISLAND'

aka "THE AMERICAN RIVIERA"



Palm Beach Island is world-renowned for its extraordinary beauty, small-town character and luxurious lifestyle. Around the entire country, whenever someone refers to "THE ISLAND", it is universally known they're referring to Palm Beach. The 16-mile-long barrier island is located 65 miles north of Miami, and is closer to the Gulf Stream than any other land area in the country, creating a paradise of lush gardens, palm-lined beaches and an abundance of marine life.

The community features stunning historic architecture, highly acclaimed shopping, dining and hotels and a luxurious culture that's been enjoyed by the rich and famous for more than 100 years. It's also home to spectacular marinas, tennis clubs and golf Clubs, as well as an award-winning Par 3 course that borders both the Atlantic and the Intracoastal. And as one of the safest and most private locations in the country, it's no wonder people from around the world choose to make Palm Beach their home.

## Palm Beach - The Origin of South Florida Decadence

Henry Flagler began construction of the Florida East Coast Railroad in 1885 with the intention of transforming the rather undeveloped areas of Central and North Florida into winter playgrounds for the nation's leisure class. During his exploration of South Florida he discovered a land with unlimited potential for development and transformation into a veritable resort-style paradise. And on a small island off of the South-East coast of Florida, he found an untapped frontier that was flourishing with natural beauty and potential, he dubbed it, "The American Riviera."

In 1894 Flagler's Royal Poinciana Hotel was completed and Palm Beach became synonymous with society. In 1896, the world-famous Breaker's Hotel opened its doors and, to this day, represents the ideals on which the island of Palm Beach was developed...class, comfort, and luxury.

## Unmatched Lifestyle Opportunities in Palm Beach

Palm Beach is divided into three different sections. The area located south of Worth Avenue, where 520 Island Dr. (Lago a Lago) is located is known as the Estate Section. During the 1920's the Estate Section was home to some of the nations most dignified families. Today the Estate Section is a mix of old and new mansions. Some Palm Beach mansions for sale span over an entire block - stretching from the Lake Worth to the Atlantic, but 520 Island Dr. is only 1 of 2 that stretches from Lake to Lake. Nowhere is opulence and extravagance more greatly exemplified and in abundance per square foot than on Worth Avenue in Palm Beach. Worth Avenue represents the winter playground for the rich and famous to both see and be seen. High fashion designer stores, exquisite jewelry shops and beautifully manicured and maintained Palm-Tree lined streets and boulevards abound.

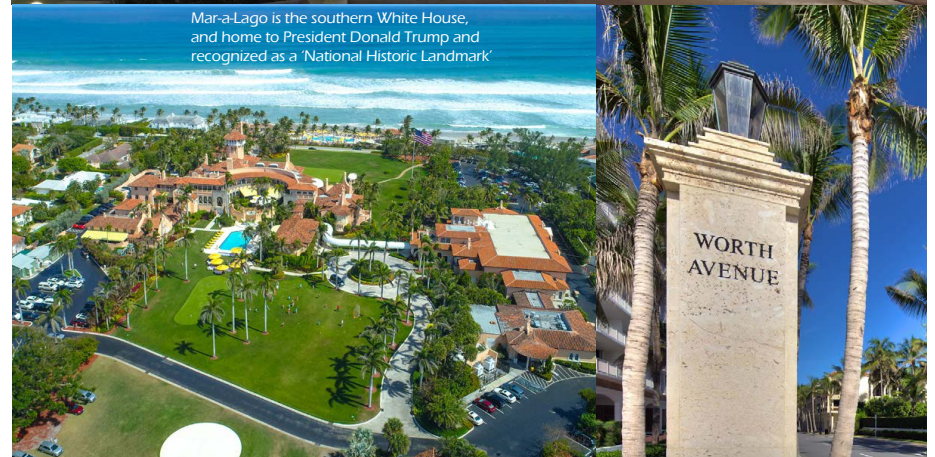
Palm Beach's deep history, nostalgic architecture, and sheer natural beauty truly make it one of Florida's greatest treasures, one that you should experience for yourself.



The Breakers Hotel is a historic landmark that helped earn Palm Beach the nickname "The American Riviera"



Developed by legendary architect Addison Mizner, Worth Avenue is one of the most upscale shopping streets in America



Mar-a-Lago is the southern White House, and home to President Donald Trump and recognized as a 'National Historic Landmark'



Top left  
The Flagler Museum, another "National Historic Landmark"

Top right  
Since 1947, The Colony Hotel has been a beloved Palm Beach landmark

Bottom left  
A ballroom at The Breakers Hotel

MODERN LUXURY  
PALM BEACH

American  
SPIRIT  
RALPH LAUREN  
TURNS 50

505 WORTH AVE., STE. 310, PALM BEACH, FL 33480  
@MLPALMBEACH  
MODERNLUXURY.COM

PLUS  
Philanthropic Leaders' Passion Projects,  
PB Symphony Hits a High Note  
& Lilly Pulitzer Island Homecoming







Hamilton Aguiar is the artist behind the Giacometti "Walking Man" and the "Balloon Swan" at 520 Island Drive (Lago-a-Lago)

Hamilton Aguiar. The neo figuration as sensuality of the tropics

The pictorial work of Hamilton Aguiar (Brazil, 1965) had its initial inspiration in the world of mural and interior design. That world where paintings, the spatial fit of objects and the handling of lights are essential to activate our senses and sensibility. A world, in which the private interiority and the home kingdom are harmonized to keep the tensions and shocks of the outside life at bay. It was in this context of applied arts where he developed a refined management of different techniques and materials of the pictorial craft. An experience that had its field of action in New York at the end of the 80s, the city where he settled residence in 1987.

Sculpture is an artistic medium in which Hamilton Aguiar has been working in recent years. A sculptural language that, similar to what happens in his painting, uses expressive resources of neo-figuration. An example of this is found in the sculpture "Everything turns to dust ... some dust turns to gold" (2015). It is a large-scale sculpture in neo-figurative language representing a great shark in gold. A shark that seems to advance undulating its body in a similar way to those that abound in the warm waters of the East coast of Florida. The piece is an explicit reference to what is already an icon of popular culture in South Florida. The experience of these years in the development of a neo-figurative language within the sculptural medium has served Aguiar to face more ambitious sculptural projects.

Aguiar's sculpture is made of steel and its colossal dimensions (14x18 feet) work as a sort of loudspeaker of the philosophical intensity that Giacometti attributes to his work. From that mentioned work Aguiar recovers an expression that contains both the meaning of life and a deep understanding of death. The viewer delves into the sculpture of an upright human body that advances with legs and arms stretched. His step seems to freeze in space denoting a robotic body movement, as if it were a machine that moves towards nowhere. In "Walking to find myself", Aguiar has employed not only a figurative language, but also resources of neo-expressionist poetics visible in the treatment of the body and the human face. The skin and the features of this giant steel body are crushed by deformations, by rugosities of different intensities. This effect is caused by the artist practicing, incisions of welds with iron wire covered with copper on the sculptural surface. Therefore, both the body and the face project a relief of accidents and slits, which are configured expressions of contradictory human feelings: loneliness and lack of love. Rough surfaces that make the naked body and its features somewhat ramshackle and counterfeit regarding to the classic canons of representation of bodily beauty.

The work of Hamilton Aguiar is represented by important galleries and exhibition spaces of contemporary art from Latin America and the United States. His work has been widely exhibited in the circuits of international fairs and is part of important collections of contemporary art, both public and private.



Art at the Lago-a-Lago gallery is from DTR Modern Galleries, Palm Beach and Silver Lining Fine Arts, Miami Beach.

# FEATURES

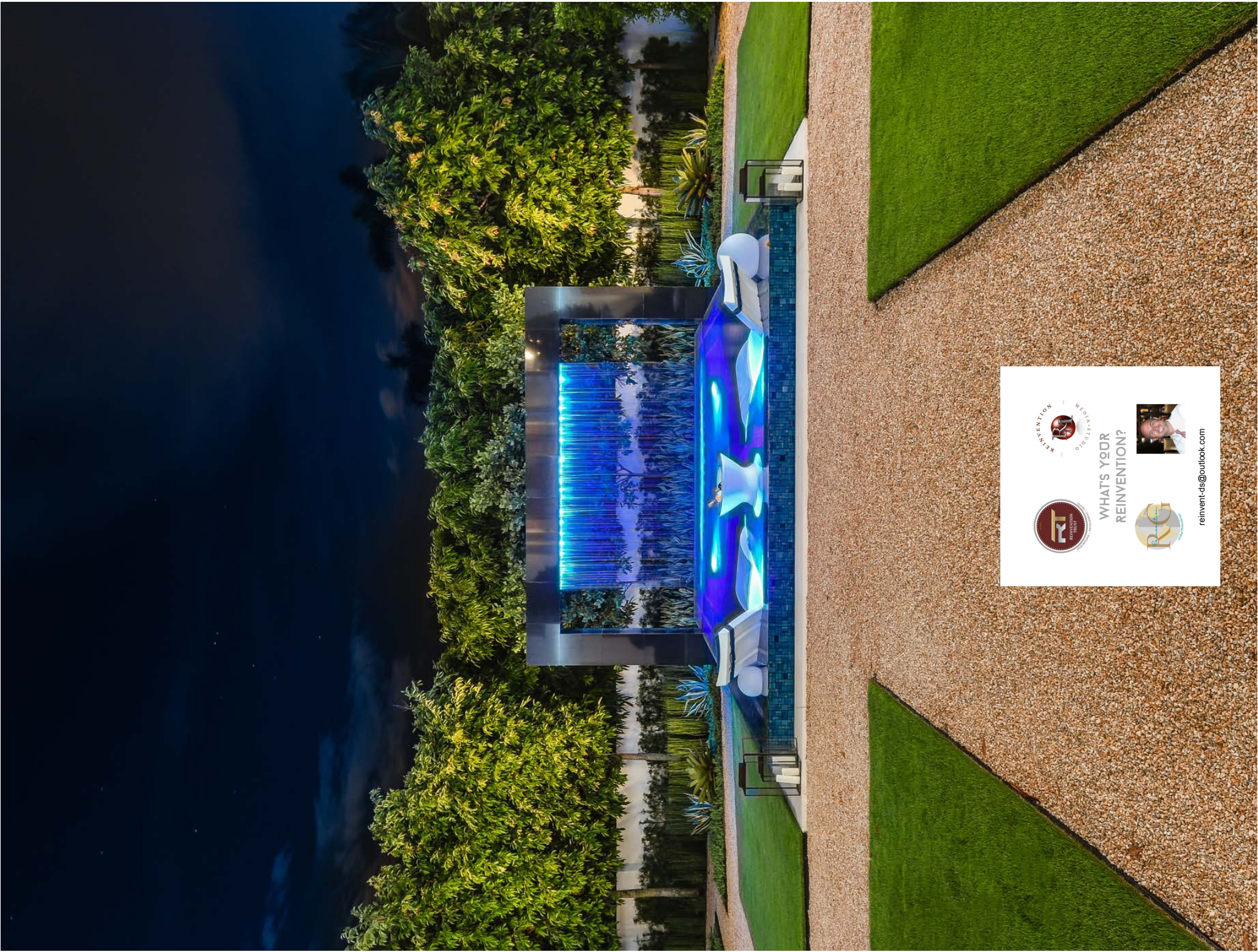
## INTERIOR

- Appliances; Wolf Gas Oven & Range, Sub Zero Freezer, Refrigerators & Ice Maker, Miele Dishwashers, Electrolux Washers & Dryers
- Italian Statuary Polished Stone Floor with Metal Brass Inlay reveals
- Wine Room with Custom Glass temperature controlled Enclosure
- European Oak Wood Floors
- Elevator with Brass Inlay and Panda Marble panels
- Custom Cantilever Floating, Architectural Stairs
- Custom Gym & Large Spa with Multiple Jets Plus Steam Room
- Teak Wood Sauna
- Home Theater System with Acoustic Fabric Surround
- Custom Kitchen & Island Wood Cabinetry w/Finger Pull Reveals
- Indoor & Outdoor backlit Onyx & Quartzite Bars
- Custom Vanity Mirrors w/Integrated LED lights
- Custom Italian Slabs—Kitchen, Island, Butler's Pantry, Bars, Laundry Rooms, Bath Vanities, & Master Closets
- Floating Bath Vanities, some with integrated marble sinks
- Floating Toto Toilets
- Custom Fireplaces, 'virtual' water-based fireplace in living room, outdoor fireplaces at pool & rooftop. Firepit on West Lakefront. Pool fireplace is a swim-up and double-sided with the first floor master
- Indoor/Outdoor Acoustics Speakers, Multi-Media PreWire, Wireless Network, Audio & Visual
- Lutron QS Lighting Control System
- Savant System Home Control/Sony TV's in multiple rooms
- Security System w/Surveillance Cameras
- Plumbing Fixtures – THG Collection, Dornbracht, Kohler, Sigma, Kallista & Toto
- Infinity Linear Shower Drains
- Water Filter System Hot Water Tanks
- Entire Home pre-wired for blackout shades/drapery
- Spa / Gym above 3 car garage
- 4 car garages Air-Conditioned and with upgraded openers
- 2 huge laundry rooms (up & down)
- Backlit Antolini Semprecious stone repeated in multiple applications
- HVAC Zones – (10) A/C Systems Total; (9) Carrier Variable Speed Heat Pump Systems & (1) Carrier Multi-port Mini Split System for Garage
- Gas Generator – Kohler (Model #100ERESD) 100KW, w/Automatic Transfer Switch

## EXTERIOR

- Solid Hartman Mahogany Hurricane Impact Windows & Doors with Impact Low-E Glass Coating from Hartman
- Exterior Jerusalem Stone Gray Royale LimeStone Cladding
- Custom Euro Edge Moat Pool/ Spa & Spool w/Cascade Waterfall Feature or Raincurtain and LED Striplight
- Entegra Flat Cement Tile Roof with 30 Year Warranty
- Pristine Specialized Designed Landscaping & Hardscape
- Front Dock (150'+) for Boating & Rear Docks for Sunbathing and Jet Skiing
- Exterior Summer Kitchen – Wolf BBQ Grill, Sink, UC Refrigerator & Icemaker
- Five Perimeter Water Features
- Balcony & Roof Terraces Glass Railings
- 1000+ sq ft. artificial grass covered Rooftop terrace
- Firepit on West lakefront lawn
- Driveway – Cast stone w/Limestone Pavers & Limestone Boarder (Jerusalem Myrna Stone)
- Pool System – System w/Remote Setting Capability to control all lighting, waterfall curtain, pools, spas, & fountains
- Sunbrite all weatherproof TV on Rooftop (Sky Lounge)





WHAT'S YOUR  
REINVENTION?



[reinvent-ds@outlook.com](mailto:reinvent-ds@outlook.com)